

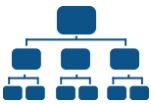
# Is your healthcare data working for you? Deerwalk can help!



## What is DeerwalkOne Provider Analytics?

DeerwalkOne Provider Analytics is a reporting and analytics tool focused on providing physicians and practice group administrators with a platform for viewing patient-focused quality measures, outcomes and utilization metrics. It facilitates data-driven decision making for healthcare providers with an easy-to-use platform capable of integrating a wide range of healthcare data types.

## Who uses it?



**Managed Care Organizations (MCOs), physician groups, Accountable Care Organizations (ACOs)** and other stakeholders in the healthcare supply chain use DeerwalkOne Provider Analytics to optimize care. It allows them to manage population health and measure physician performance, all from a single platform.



**Medical Management Companies** use DeerwalkOne Provider Analytics to generate a 360-degree view of patients, their clinical risk indicators and care gap alerts in order to identify opportunities for interventions.



**Practice Group Administrators and Primary Care Providers** Practice Group Administrators and Primary Care Providers use DeerwalkOne Provider Analytics to help patients manage their health by leveraging its ability to collect healthcare data from disparate sources into a single platform. Reports and summaries that are generated in minutes or seconds rather than hours allow for real time interventions.



Additionally, many clients use DeerwalkOne Provider Analytics as a data warehouse. They store and manage all types of data including benefits information such as payroll, workers' compensation, and 401k information; consumer data, like medical and pharmacy claims; and clinical data, including lab and Health Risk Assessment (HRA) results. Deerwalk integrates virtually any data generated in the healthcare ecosystem. Users can easily access information by searching with any combination of parameters, instantaneously. With DeerwalkOne, there is no need to wait for custom reports to be pre-programmed.

## Advantages

- Built using highly flexible and scalable Big Data technology
- Cloud-based platform for ease of accessibility and low cost of ownership
- Opportunity and risk identification through Milliman Advanced Risk Adjusters (MARA)
- Real-time cohort creation and comparison
- Allows providers to monitor their progress with performance and quality metrics

- Only one company provides an integrated suite of health analytics solutions on a single platform.
- Only one puts Big Data to work for you.
- Only one. Deerwalk.
- Only one transforms the experience.
- DeerwalkOne

**Learn more and view product tutorials on our YouTube Page:**

<https://www.youtube.com/user/deerwalkchannel/videos>